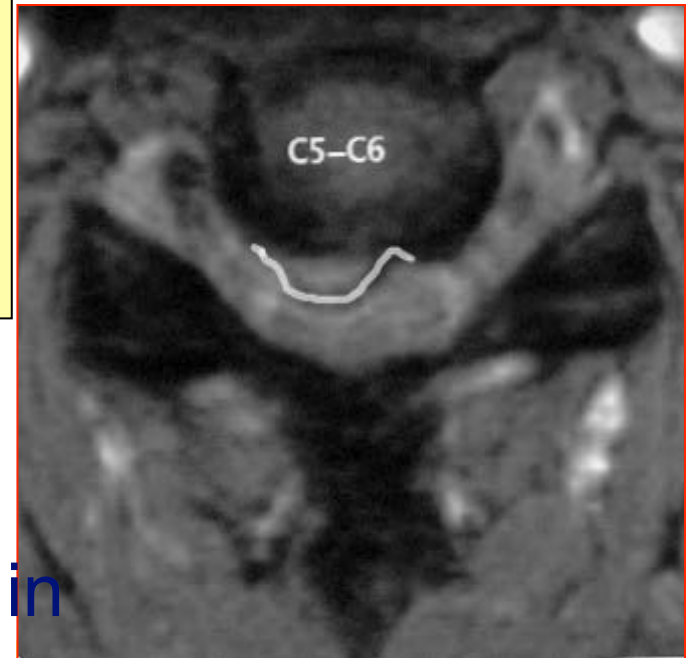


Cervical Disc Herniation (CDH)

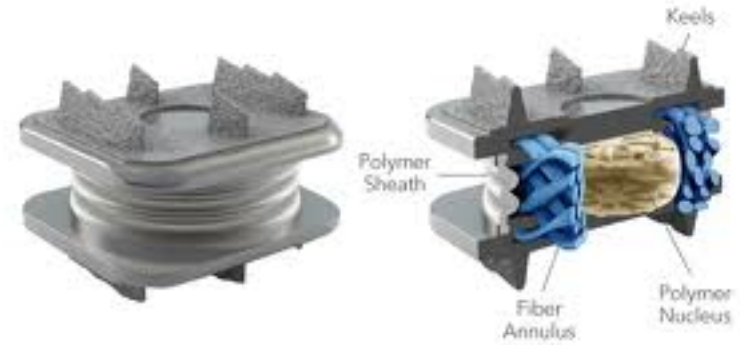
Patients Selection: Our guidelines to **TOTAL DISC REPLACEMENT**

1. Soft CDH;
2. Young age (<50 y.o.);
3. Almost 2 months of conservative ter. in absence of deficits; earlier surgery in presence of motor deficits;
4. Levels: C4-C5, C5-C6, C6-C7;
5. One level CDH;
6. NO myelopathy;
7. NO severe spondylosis;
8. NO post-traumatic herniation;
9. NO severe systemic disease.



MIG-Roma

PRELIMINARY RESULTS

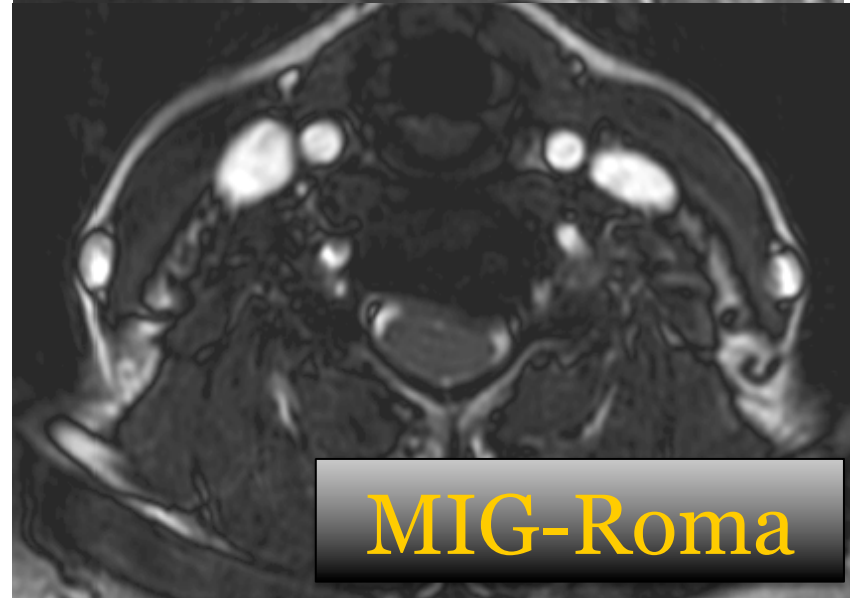
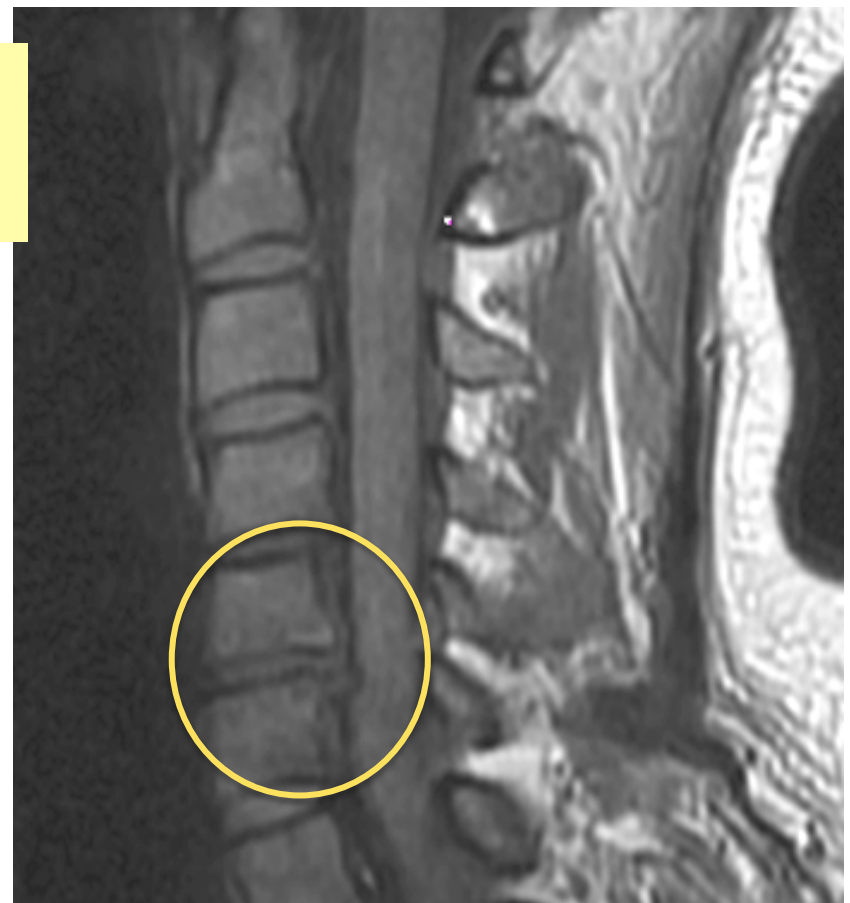
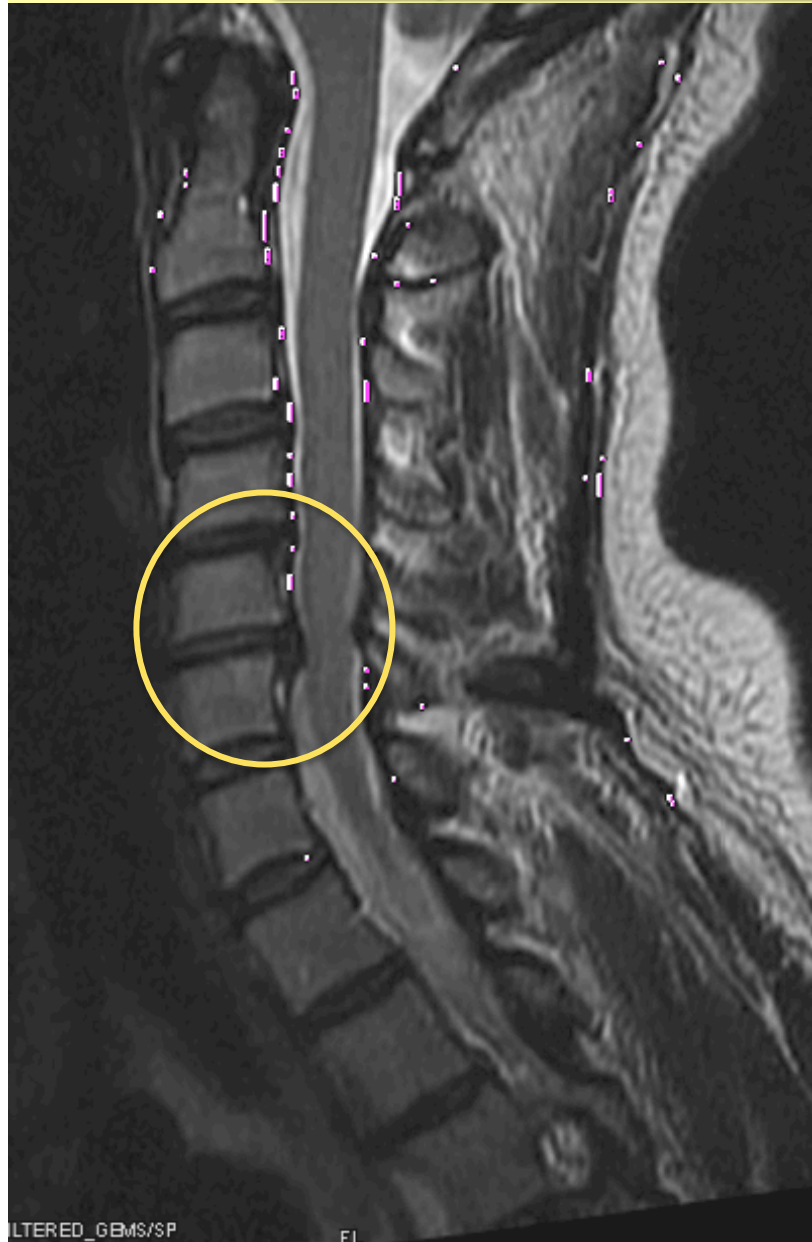


1. In **43 cases** operated on: **regular** postop. course with **improvement/disappearance** of symptoms.
2. In **any case** a second surgery was necessary for **complications**.
3. **All** patients consider at distance the **results** as **good** or **very good**, with X-rays maintenance of physiological **lordosis**.



MIG-Roma

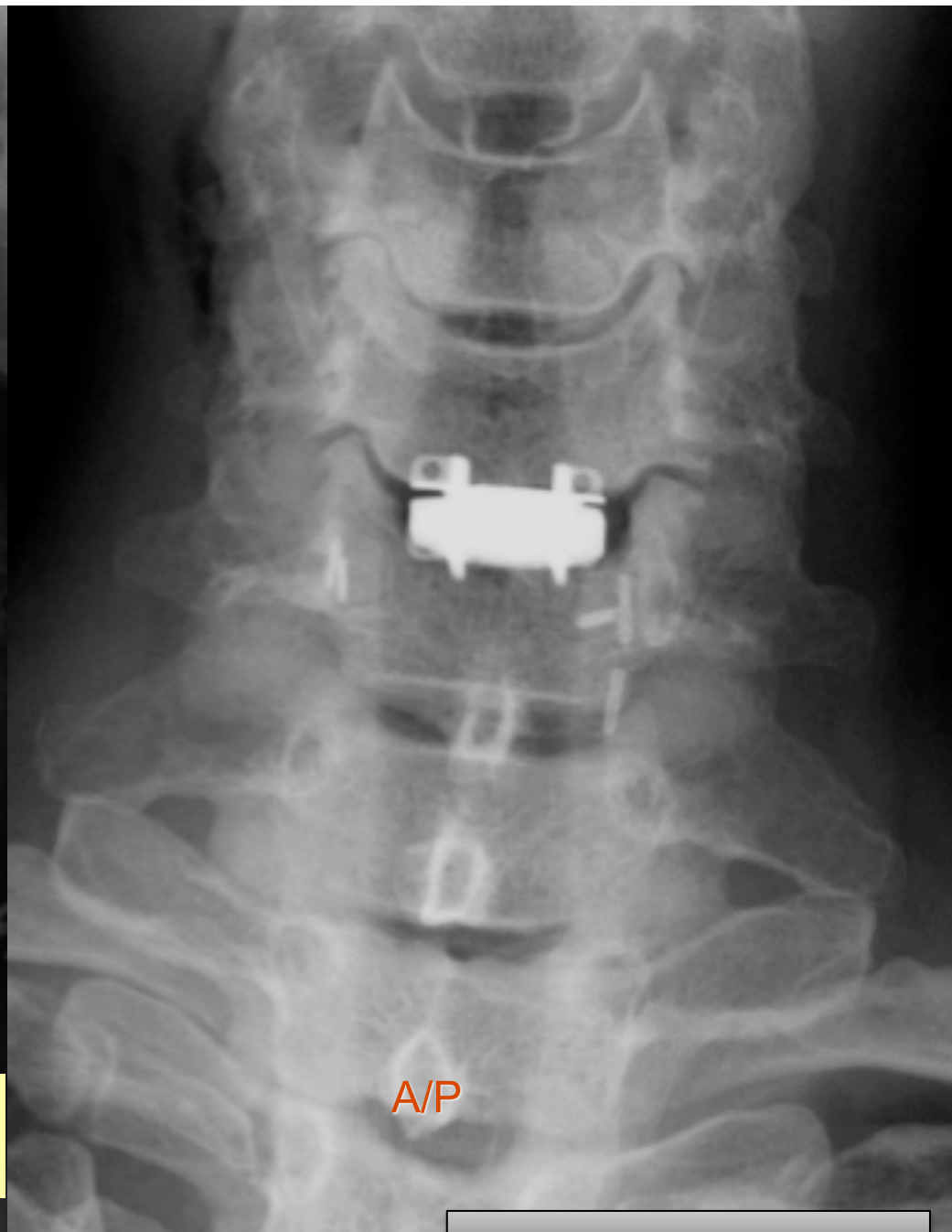
Left C5-C6 soft CDH Preoperative MRI



G1.0F#0.80+0.55,MCRO.7AKD.2,C*1.0*1.0



Neutral Lateral and AP X-rays performed the day after surgery



A/P

MIG-Roma



Flexion

MIG-Roma



Extension

MIG-Roma

Conclusions



Following the correct indications,
Total disc replacement
represents the future of surgical
treatment of cervical soft disc
herniation.

MIG-Roma